

2017	Heteropterus Revista de Entomología Heteropterus Rev. Entomol.	17(1): 63-66
------	--	---------------------

ISSN: 1579-0681

**An addition to the fauna of true bugs
(Insecta: Heteroptera) of the Canary Islands
including a discussion on the status of
Conostethus venustus longicornis Wagner, 1965
(Heteroptera: Miridae)**

CH. RIEGER

Lenbachstraße 11; D-72622 Nürtingen; E-mail: christian.rieger@kabelbw.de

Abstract

Data on five species of true bugs new to La Palma are presented (Hemiptera: Heteroptera). The problem of the status of *Conostethus venustus* on the Canary Islands is discussed (Heteroptera: Miridae).

Key words: Heteroptera, addition, Canary Islands, La Palma, *Conostethus venustus longicornis* Wagner, 1965.

Resumen

Adición a la fauna de chinches (Insecta: Heteroptera) de las Islas Canarias, con discusión del estatus de *Conostethus venustus longicornis* Wagner, 1965 (Heteroptera: Miridae)

Se presentan datos sobre cinco especies de chinches nuevos para La Palma (Hemiptera: Heteroptera). Se discute la cuestión del estatus de *Conostethus venustus* en las Islas Canarias (Heteroptera: Miridae).

Palabras clave: Heteroptera, adición, Islas Canarias, La Palma, *Conostethus venustus longicornis* Wagner, 1965.

Laburpena

Kanaria Uharteetako zimitzen faunari eransketa bat (Insecta: Heteroptera), *Conostethus venustus longicornis* Wagner, 1965-ren estatusari buruzko eztabaidarekin (Heteroptera: Miridae)

La Palma-rako berriak diren bost zimitzi buruzko datuak aurkezten dira (Hemiptera: Heteroptera). Kanaria Uharteetako *Conostethus venustus* en estatusa eztabaidatzen da (Heteroptera: Miridae).

Gako-hitzak: Heteroptera, eransketa, Kanaria Uharteak, La Palma, *Conostethus venustus longicornis* Wagner, 1965.

1. Species new to the island of La Palma

During a holiday stay at mid-March 2016 on the island some collections were made. Sixty-nine species of Heteroptera were found; five of them revealed as new for the island.

Reuterista instabilis (Fieber, 1861)

Gravel pit N of El Paso, 17°50'44" W 28°39'47" N, 12.iii.2016, 3 ♂♂ 2 ♀♀ with larvae swept from herbaceous vegetation. The food plant is probably *Bituminaria bituminosa* L. The species was missing only on La Palma and La Gomera.

***Orsillus depressus* (Mulsant & Rey, 1852)**

La Punta, 17°56'38" W 28°40'29" N, 8.iii.2016, numerous specimens on *Cupressus* at the road side. Known from Lanzarote.

***Dicranocephalus insularis* (Dallas, 1852)**

Los Llanos, holiday complex Villa & Casitas Caldera, 17°54'58" W 28°40'19" N, 10.iii.2016, 1 ♂ at lamp. Until now known from Gran Canaria and Fuerteventura.

***Amaurocoris curtus* (Brullé, 1839)**

Outskirts of Puerto Naos, ruderal site, 28°35'05" N 17°54'27" W, 19.iii.2016, 2 ♂♂ 1 ♀ living specimens under *Heliotropium*. Under the *Heliotropium* plants, there lives a remarkable black spider with small males and bigger females (*Latrodectus* sp.). Therefore it was not surprising to find numerous torsi wound by cobwebs beside the living specimens.

***Piezodorus teretipes* (Stål, 1865)**

Outskirts of Puerto Naos, ruderal site, 28°35'05" N 17°54'27" W, 11.iii. and 19.iii.2016, numerous specimens under *Heliotropium*. Several specimens in copulation. Known from Gran Canaria, Fuerteventura and Lanzarote. The species of the genus *Piezodorus* mostly are found on representatives of the plant family Fabaceae. In the coastal dunes near Risco del Paso on Fuerteventura the author found the species on *Ononis* (Fabaceae) in great numbers. *Heliotropium* (Boraginaceae) as food plant seems remarkable.

In the comprehensive paper of Aukema *et al.* (2013) on the Heteroptera fauna of La Palma a total number of 216 species is reported for the island. The number now increases to 221.

2. The status of *Conostethus venustus longicornis* Wagner, 1965

In Lindberg and Wagner (1965), E. Wagner described a subspecies of *Conostethus venustus* (Fieber, 1858) from the Canary Islands of Fuerteventura and Lanzarote without giving precise data on the holotype. According to Aukema (1999) the data are: Lanzarote Is., Penhas del Chacha, 13-22.iii.1963, leg. H. Lindberg.

As mentioned by Wagner (1965), the differences between the nominate and the new subspecies *longicornis* are as in Table 1.

In my material from La Palma (53 specimens collected between 1990 and 2016) no individuals could be found which fitted the details given by Wagner. By the kindness of B. Aukema and E. Heiss I had the opportunity to examine specimens from Lanzarote which then fitted well the Wagner specifications (Table 2, Fig. 2). The comparison with specimens from Central Europe (Germany) and Southern Europe (Greece) resulted in better accordance with the La Palma specimens than with material from Lanzarote. Specimens from La Palma are distinctly smaller than the Lanzarote specimens (Fig. 1) and even smaller as specimens from the European main-

	<i>C. venustus longicornis</i>	<i>C. venustus venustus</i>
Body length	♂♂ 3.5 – 3.6 mm ♀♀ 3.05 – 3.45 mm	♂♂ 2.5 – 3.0 mm ♀♀ 2.5 – 2.8 mm
Ratio length 2 nd antennal segment / head width	♂♂ 1.20 – 1.25 mm ♀♀ 1.0 mm	♂♂ 0.95 – 1.0 mm ♀♀ 0.80 – 0.85 mm
Ratio length antennal segments 3 rd + 4 th / 2 nd	3 rd + 4 th = 2 nd	3 rd + 4 th distinctly longer than 2 nd
Vesica	very long and thin, smoothly curved	stronger, more curved in the basal part

TABLE 1. Differences between *Conostethus venustus venustus* and *Conostethus venustus longicornis* according to Wagner (1965).

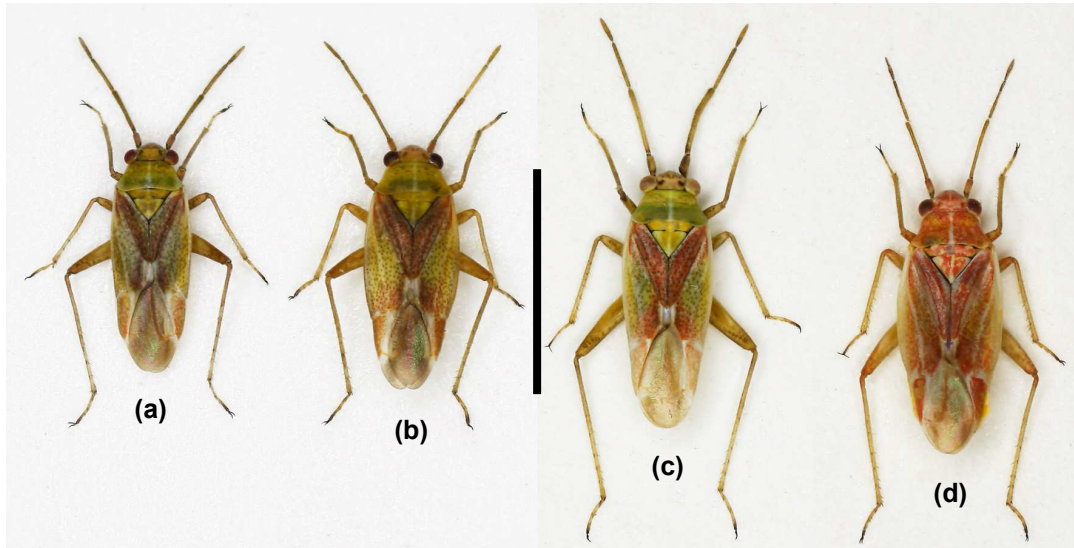


FIGURE 1. *Conostethus venustus* (Fieber, 1858): (a)-(b) La Palma, gravel pit nr. El Paso (17°50'44" E 28°39'42" N), 12.iii.2016, leg. Rieger: (a) Male; (b) Female; (c)-(d) Lanzarote, Arrieta, Playa de la Garita, 21. & 23.ii.1997, leg. Aukema: (c) Male; (d) Female (Scale bar = 3 mm).

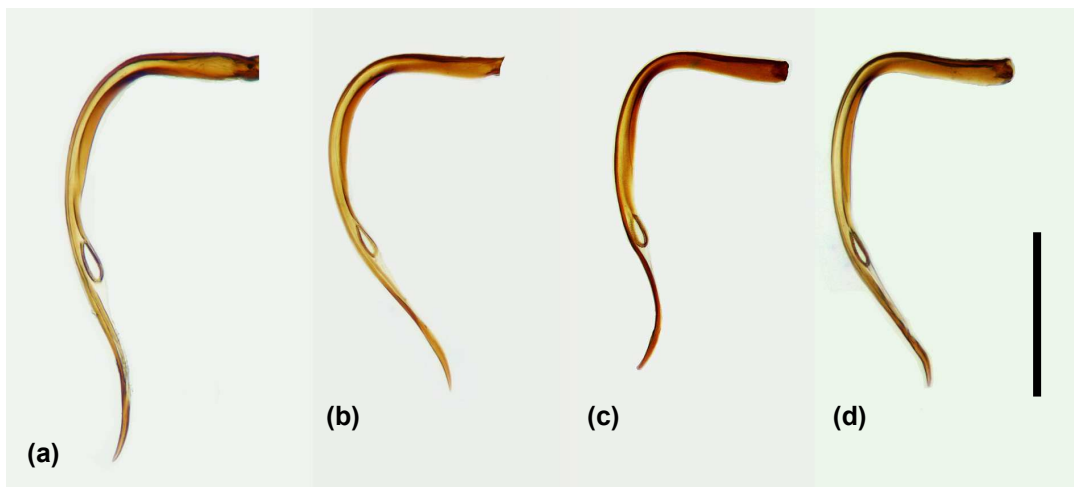


FIGURE 2. Vesica of *Conostethus venustus* (Fieber, 1858) from: (a) Lanzarote (dates as Table 2); (b) La Palma (dates as Figs. 1a-b); (c) Germany (Schlossböckelheim, dates as Table 2); (d) Greece (Monemvasia, dates as Table 2) (Scale bar = 0.2 mm).

land (Table 2). The result suggests the existence of two subspecies on the islands. However, further material from the other five Canarian Islands should be examined.

Acknowledgements

For the loan of the Lanzarote material I'm thankful to Dr. Berend Aukema (Wageningen) and Prof. Dr. Ernst Heiss (Innsbruck).

	Head width	Length 2 nd antennal segment	Length 3 rd + 4 th antennal segment	Body length (without wings)	2 nd antennal segment / head width	2 nd / 3 rd + 4 th antennal segments
Canary Islands, Lanzarote , Arrieta, Playa de la Garita, 21. & 23.02.1997 (13°27' W 29°07' N), Aukema leg.						
♂♂	0.77– 0.81 –0.85	0.77– 0.88 –0.92	0.87– 0.96 –1.00	2.50– 2.70 –2.80	0.96– 1.09 –1.19	0.94– 1.05 –1.14
♀♀	0.82– 0.84 –0.87	0.75– 0.78 –0.85	0.87– 0.89 –0.92	2.95– 3.17 –3.40	0.88– 0.92 –1.00	0.83– 0.87 –0.92
Canary Islands, La Palma , SW Santo Domingo, 21.03.2010 (17°57' W 28°48' N), Rieger leg.						
♂♂	0.70– 0.73 –0.75	0.65– 0.69 –0.75	0.72– 0.81 –0.95	2.10– 2.25 –2.35	0.86– 0.94 –1.00	0.78– 0.85 –0.97
♀♀	0.77– 0.78 –0.80	0.62– 0.66 –0.77	0.75– 0.79 –0.82	2.60– 2.71 –2.80	0.77– 0.84 –0.97	0.77– 0.83 –0.93
Germany, Rhineland-Palatinate, Schlossböckelheim, 29.06.1985 (7°44' E 49°47' N), Rieger leg.						
♂♂	0.72– 0.76 –0.82	0.60– 0.67 –0.80	0.80– 0.82 –0.92	2.25– 2.33 –2.40	0.82– 0.88 –0.97	0.77– 0.81 –0.87
♀♀	0.80– 0.82 –0.85	0.62– 0.68 –0.77	0.72– 0.77 –0.82	2.80– 2.98 –3.20	0.76– 0.82 –0.92	0.84– 0.87 –0.96
Greece, 5 km S of Monemvasia, 13.04.1987 (23°01' E 36°38' N), Rieger leg.						
♂♂	0.77– 0.77 –0.80	0.65– 0.72 –0.80	0.75– 0.82 –0.87	2.05– 2.40 –2.80	0.84– 0.92 –0.96	0.82– 0.86 –0.93
♀♀	0.82– 0.82 –0.85	0.62– 0.66 –0.70	0.75– 0.76 –0.82	2.60– 2.87 –3.20	0.75– 0.80 –0.85	0.79– 0.86 –0.93

TABLE 2. *Conostethus venustus* (Fieber, 1858) (n = each 7 ♂♂ and 7 ♀♀; measurements expressed as: min– \bar{x} –max).

References

AUKEMA B. 1999. *Type specimens of some Palaearctic Miridae (Heteroptera)*: 1-32. B. Aukema. Renkum, The Netherlands.

AUKEMA B, DUFFELS H, GÜNTHER H, RIEGER CH, STRAUB G. 2013. New data on the Heteroptera fauna of La Palma, Canary Islands (Insecta: Hemiptera). *Acta*

Musei Moraviae, Scientiae Biologicae (Brno) **98(2)**: 459-493.

LINDBERG H, WAGNER E. 1965. Supplementum secundum ad cognitionem Hemipterorum Insularum Canariensium. *Commentationes Biologicae* **28**: 1-14.

Received / Recibido / Hartua: 25/04/2017

Accepted / Aceptado / Onartua: 29/05/2017

Published / Publicado / Argitaratua: 30/06/2017